



CONCORD MUSEUM

WINTER 2021 Newsletter

Published quarterly for Members and Friends of the Museum

Our New Concord Museum!

On September 12, 2021, the Concord Museum community celebrated the completion of the *New Museum Experience* initiative which has involved designing and fabricating all new permanent galleries. Over ten years in the making, the new galleries have opened to rave reviews. After her first visit, *New Yorker* staff writer and Harvard historian Jill Lepore described them as “extraordinary new exhibits featuring fantastic interpretive work.”

The Museum’s most recent phase of the new installation covers over 250 years of Concord’s history, featuring stories drawn from our nationally significant collection—from 17th century embroidery to Thoreau’s humble green desk which is celebrated with a beautiful media presentation. Visitors can also engage with Ralph Waldo Emerson’s study through a new multi-media interactive and watch a video of historian Laura Walls put Thoreau and Emerson’s lives and friendship in perspective.

The new galleries also pay tribute to the everyday men and women, sometimes forgotten to history, who lived in Concord and participated in its growing agricultural and artisan community.

Since opening, we have welcomed thousands of visitors, students, and families who have offered extraordinary praise for how the new displays present Concord’s history in a whole new light and provide an engaging and inspiring museum experience. We thank our entire community for their continued support and welcome everyone to visit and experience our revolutionary and newly designed galleries.



From Edward W. Kane Executive Director Tom Putnam



“We dress our garden, eat our dinners, discuss the household with our wives, and these things make no impression, are forgotten next week; but in the solitude to which every man is always returning, he has a sanity and revelations, which in his passage into new worlds he will carry with him. Never mind the ridicule, never mind the defeat: up again, old heart!”

— Ralph Waldo Emerson

At our September 12 celebration to mark the 386th anniversary of the incorporation of Concord and the re-opening of our new permanent galleries, I ended my remarks by evoking the Indigenous People on whose land we were standing and, later, after Concord’s founding, the man who owned this parcel, our neighbor Ralph Waldo Emerson.

“One generation passes away and another generation comes;” scripture reminds us, “but the earth abides forever.”

We have done our best in our new galleries to convey the story of those who lived and sustained themselves on this land they called Musketaquid; to recount the trials of the first colonists who brought their custom of privately owned lands with them; and to pay tribute to those who then worked these fields and milldams, free and enslaved, heirs to the first European families or recent immigrants.

And I invoked Emerson’s famous essay on “self-reliance” by which he meant not a hackneyed pull-yourself-up-by-the-bootstraps philosophy of the self-made man, but the importance of self-awareness and self-understanding.

We have many hopes for our new galleries—that they will bring in more visitors, provide greater opportunities for educating school children, and better display and protect our treasures—all of which are fine goals.

But in the end, the key lesson they engender is that our most trusted resource must be our own individual conscience—that is the message of Emerson and Thoreau, that is at the heart of any functioning self-governing democracy, that was what was at stake on the North Bridge.

“Our national strength matters; but the spirit which informs and controls our strength matters just as much.” And it is my hope that our new galleries and the thoughtful interpretation of Concord’s past they provide will contribute “not to our size but to our spirit, not to our knowledge but to our insight, not to our self-esteem, but to our self-comprehension.” And we hope that all who visit our Museum will leave inspired to continue the quest of our forebears to build a community, nation, and world that is more just, more equitable, more empathetic, and more free.

I had my own personal experience recently of generational shift when my son, Gabe, and I followed in Thoreau’s footsteps in “the Maine woods” and hiked Mount Katahdin. After two decades of father/son hikes—there is no question who, at this point, is helping whom.

And while Emerson’s challenge “never mind the ridicule, never mind the defeat: up again, old heart” still speaks profoundly to me—to be honest I wondered whether my “old legs” could match my youthful enthusiasm.

In the end we made it to the summit on a gorgeous fall day—just as this community, together, coaxed our way to “the promised land” of an entirely new and transformed museum.

The 360-degree vistas from such heights are awe-inspiring and remind us of the new directions we can pursue.

Up again old hearts! Will you join us in the next leg of this journey?



HOME

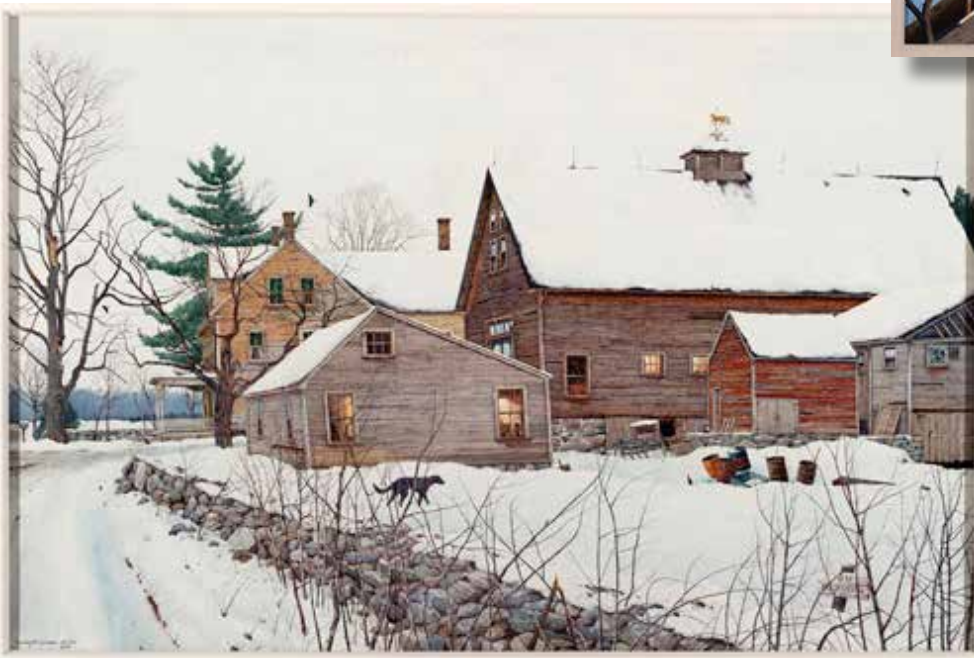
PAINTINGS BY
Loring W. Coleman

On a cold winter's day in 1982, artist Loring Wilkins Coleman (1918-2015) embarked on one of his favorite activities: driving around Massachusetts to look at old barns and houses. In Sterling, he found "one of the most handsome New England farms I had ever seen," recalled Coleman. It took ten days to complete a detailed pencil drawing of the farm buildings, but it wasn't until 2003 that Coleman finished his painting. By that point, all but one of the original buildings were gone and Coleman used his imagination to color in the details he remembered. He called the painting *Home*. "The title speaks for itself," wrote Coleman, "for the painting represents the old farmhouses that still remain in New England and in my thoughts."

In 2017, the Concord Museum received a generous anonymous gift of forty-seven of Coleman's paintings. Originally displayed in 2020 in the midst of the pandemic, few visitors were able to come and see this remarkable collection of paintings that reveal a fascination with, and a sadness over, the changing New England landscape. Drawn from real-life subjects in and around Massachusetts primarily, Coleman's paintings are often monumental in size and incredibly detailed. When he could, Coleman painted *en plein air*, or outdoors, capturing his subjects at different times of day and under diverse weather conditions. Inside the studio, he consulted sketches and preliminary watercolors when putting together the final artwork.

We are pleased to again present this exhibition with some new additions and celebrate the work of an accomplished artist who had a strong Concord connection and who explored the local New England landscape with a sense of wonder and authenticity. **We hope that this time our members and friends will be able to visit and, in a sense, be welcomed HOME again.**

On Exhibit in the
Wallace Kane Gallery
November 19, 2021 through
January 30, 2022



"I am always drawn to an old barn... because there are so few of them left, and they remind me of my grandparents' farm and a rural life now gone."

—Loring W. Coleman

Above: *Home*
Loring W. Coleman | Sterling, Massachusetts, 2003
Watercolor on paper | Anonymous Gift (2017) 2017.13.4
Photograph Courtesy of the Family of Loring W. Coleman

Above right: *The Four Winds Are the Ringmaster*
Loring W. Coleman | Watercolor on paper
Anonymous Gift (2017) 2017.13.27
Photograph Courtesy of the Family of Loring W. Coleman

PUBLIC PROGRAMS

This winter, Museum programming is both in-person and virtual. Please indicate during registration which type of program you are attending.

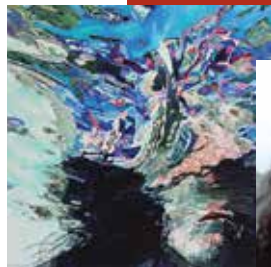
JANUARY

Watercolor Landscape Workshop

Wednesday, January 12 | 6:00 – 8:00 pm
Members \$15 | Non-Members \$25 | Materials Fee: \$10

Unleash your inner artist in a watercolor paint night at the Museum! This special evening begins with a visit to the special exhibition *Home: Paintings by Loring W. Coleman*, where instructor Kat O'Connor will introduce a selection of Coleman's paintings that exemplify the study of light and time in the New England landscape. In the second part of the workshop, observe a watercolor demonstration and experiment with brushes, washes, and mark-making as you create a landscape of your own. Bring a friend or make a few as you discover the fun of watercolor.

In partnership with the Umbrella Arts Center.



FEBRUARY

Henry David Thoreau's Geologic Soulmate

Thursday, February 10 | 6:00 – 7:00 pm
Members \$20 | Non-Members \$30

Lisa H. Foote History Learning Center

Henry David Thoreau's geological specimen boxes are taken out of the new Thoreau gallery for an up-close look at the boxes, made by Thoreau and filled with specimen previously thought to have been collected by Rev. Joseph Osgood. Harvard professor Reed Gochberg shares her research that indicates the collection instead belonged to Ellen Sewall, one-time love interest and life-long friend of Thoreau. *This program is an event of the Cummings Davis Society, which provides opportunities for those interested in American decorative arts and material culture to explore the Museum's collection and support acquisition and conservation. All are welcome!*

Henry David Thoreau's Geological Specimen Box; Concord Museum, Gift of Mrs. Gilbert S. Tower; Th114.



February School Vacation Week

Monday, February 21 – Friday, February 25 | 10:00 am – 4:00 pm
Free with Museum admission

Visit the new galleries during February vacation week and drop by the Churchill and Janet Franklin Lyceum for family activities.



A Visit with President Lincoln

Monday, February 21 | 1:00 – 2:00 pm
Non-members \$16/\$8 child | Members \$10/\$6 child; ticket price includes Museum admission and crafts after the performance.

The Museum is pleased to again host Steve Wood and his amazing performance as Abraham Lincoln. Wood's first-person historical interpretation, "A Visit with Abraham Lincoln," includes stories of Lincoln's early life, campaign debates, the Civil War, and concludes with a stirring reading of the Gettysburg Address.

Accompanying President Lincoln's visit, families can participate in a President's Day craft to learn about how we celebrate and remember past leaders.



Sweet History: Colonial Chocolate

Thursday, February 24 | 10:00 am – 4:00 pm
Free with Museum admission

Drop in throughout the day to immerse yourself in the colonial home as a living historian grinds cocoa beans, adds spices, and concocts delicious treats by the winter hearth. Read a colonial recipe or "receipt" and decipher the steps to cooking rare delicacies in colonial Concord.



Family Trees at the Concord Museum

26th Annual Celebration of Children's Literature

NOVEMBER 24, 2021—JANUARY 2, 2022

32 fanciful trees and wreaths of all shapes and sizes, decorated with original ornaments inspired by acclaimed children's picture books.

“Family Trees is such a joyous celebration of the holidays and books. It's so much fun to see your favorite book come to life on a tree.”

2021 Honorary Chair: Award-winning author/illustrator Grace Lin



Photo credit: Danielle Tait

Page to Stage Puppet Show

Saturday, December 4 | 11:00 – 11:45 am
Free with Museum admission

Colorful and beloved characters from stories around the world come alive on the puppet stage. Some stories are interactive, some hilarious, all have positive messages! Experience your favorite stories in a new way and meet new friends from stories you may not know yet.

Constellation Craft

Sunday, December 5 | 10:00 – 12:00 pm
Free with Museum admission

During *Family Trees*, families can drop in to read *Ada and the Galaxies* and imagine the universe we live in. Design your own constellation of stars while exploring the galaxy.

An Afternoon with Authors and Illustrators

Sunday, December 5 | 1:00 – 3:00 pm
Free with Museum admission

Meet some of the accomplished authors and illustrators whose books are featured in *Family Trees: A Celebration of Children's Literature*. Explore the decorated forest of trees throughout the Museum and visit with authors and illustrators as they sign your books.

In partnership with the Concord Bookshop.

Reach for the Stars Stargazing Event

Sunday, December 5 | 4:00 – 5:00 pm
Free with Museum admission

Explore the galaxies without leaving Earth! Join Jim Zebrowski of the Aldrich Astronomical Society for a demonstration of how telescopes help us see far, far away, all in honor of the new picture book *Ada and the Galaxies*.

Drop-In Flower Design

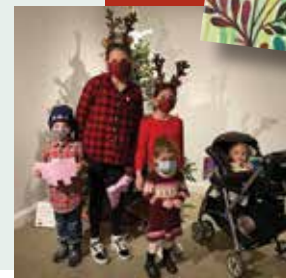
Saturday, December 11 and Sunday, December 12 | 10:00 am – 4:00 pm
Free with Museum admission

Families can design their own flowers while reading *Have You Ever Seen a Flower?* and *Welcome Flower Child: The Magic of Your Birth Flower*. Learn about the different types of flowers and the symbolism behind them.

Holiday Members' Night

Tuesday, December 14 | 4:30 – 7:30 pm
Free and Exclusive to Concord Museum Members

Celebrate the winter season with an evening of viewing *Family Trees* and enjoying festive libations and treats. Stop by pop-up shops throughout the Museum to find unique gifts and take advantage of discounted holiday shopping from your favorite local shops, including the Museum's shop! This special event is open to members of the Concord Museum.



Lead Sponsor



Media Sponsor



concord museum FORUMS and PUBLIC PROGRAMS

This winter, Museum programming is both in-person and virtual. Please check during registration which type of program you are attending. Concord Museum Forums are supported in part by the Sally Lanagan Fund.

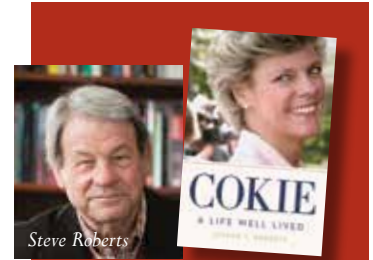
DECEMBER

Cokie: A Life Well Lived, with Steve Roberts

Monday, December 6 | 7:00 – 8:00 pm | Virtual Forum

Join Steve Roberts as he discusses his new book and loving tribute to his late wife: *Cokie: A Life Well Lived*. Cokie Roberts was a fixture on national television and radio. She also wrote bestselling books on the role of women in American history and spoke on one, *Founding Mothers*, here at the Concord Museum.

In partnership with the Golden Ball Tavern Museum.



The Supreme Court and the Peril of Politics

Thursday, December 9 | 7:00 – 8:30 pm | Virtual Forum

(see page 8 for more information)

JANUARY

Patriots v. Loyalists: Our First Civil War

Wednesday, January 5 | 7:00 – 8:00 pm | Virtual Forum

In his powerful new history, H. W. Brands shows the American Revolution to be more than a fight against the British: it was also a violent battle among neighbors forced to choose sides, Loyalist or Patriot.

Loring Coleman: Artist, Teacher, Friend

Tuesday, January 11 | 7:00 – 8:00 pm | Virtual Forum

Henry Adams, Professor of American Art at Case Western Reserve University will discuss with others his former teacher, Loring Coleman, in conjunction with the Museum's new temporary exhibit of Coleman's paintings.

Frozen Over: Boston's Nineteenth Century Ice Age

Tuesday, January 25 | 7:00 – 8:00 pm | In-person and Virtual Forum

The Boston area, and Concord in particular, became a key center of ice production and trade in the nineteenth century. Concord native and Boston University professor, Andrew Robichaud, explores Boston's economic and cultural "ice age," and considers its lasting implications.

Antisemitism: Then and Now

Wednesday, January 26 | 7:00 – 8:00 pm | In-person and Virtual Forum

Join Boston College historian, Charles Gallagher, S.J., as he discusses his new book, *Nazis of Copley Square*, chronicling a crucial missing chapter in the history of the American far right. He will be joined by former editor of the *Pittsburgh Gazette*, David Shribman, whose paper won a Pulitzer Prize in 2019 for its coverage of the tragic shootings at the Tree of Life synagogue in Squirrel Hill.

FEBRUARY

On Phillis Wheatley

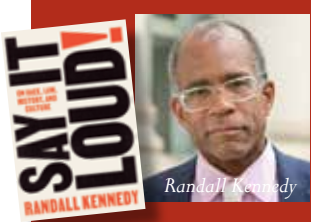
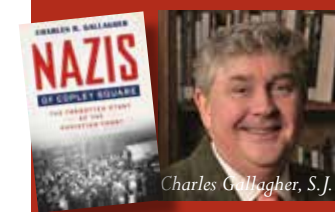
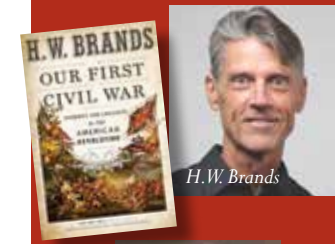
Tuesday, February 1 | 7:00 – 8:00 pm | In-person and Virtual Forum

Join historians Cornelia Dayton and Kerri Greenidge in a conversation about famed poet Phillis Wheatley Peters (1753–1784) whose poems and example served as a catalyst for the fledgling antislavery movement.

Say It Loud! On Race, Law, History, and Culture

Tuesday, February 8 | 7:00 – 8:00 pm | Virtual Forum

Join Harvard Law Professor Randall Kennedy as he discusses his newest collection of provocative essays exploring the key social justice issues of our time—from George Floyd to antiracism to inequality and the Supreme Court.



Holiday HOUSE TOUR INSIDE OUT

Join the Guild of Volunteers for the 11th Annual Holiday House Tour on Saturday, December 11! We are thrilled to return this year's event to an in-person format, with the exciting twist of featuring a variety of beautifully decorated outdoor spaces sure to delight and inspire. Hidden and often overlooked spaces, like patios, porches, doorways, barns, and gazebos, will take center stage for this showcase of outdoor winter wonderlands. Concord's holiday charm will be on full display in these unique settings, with the magic of twinkling lights and richness of abundant greens enhanced by the seasonal atmosphere. Gather your friends and bundle up to enjoy this one-of-a-kind holiday tour!

Tickets: \$30 Members | \$35 General Public. Available at concordmuseum.org
Inclement weather date: Sunday, December 12



Give the Gift of Membership this Holiday Season

Wondering what to give friends and family members this year that isn't "more stuff"? Give the gift of experience and engagement at the Concord Museum!

The past year and a half has taught us that time spent with family and friends is the most precious commodity in the world. Every moment of time you spend visiting a new special exhibition, bringing your children or grandchildren to *Family Trees*, attending an evening forum, or participating in a family program on a holiday weekend brings you closer to your family and community.

This holiday season, consider giving the gift of a Concord Museum membership for a year of inspiring, informative, and creative experiences for someone in your life.

Your tax-deductible membership gift directly supports the Museum's work to achieve our mission: to serve as a center of learning and culture for the region and a gateway to Concord for visitors from around the world.

Visit <https://concordmuseum.org/support/join/gift-membership/>

Or Contact Allison Shilling, Senior Program Officer, at 978.369.9763 ext. 238 or ashilling@concordmuseum.org.

One more thing: Are you thinking about purchasing a Museum membership for a Giving Tree, Yankee Swap or similar activity where you don't know the recipient's name? Give us a call.



Join us on December 3rd from 6:30-8:30 p.m. as the Concord Museum transforms into a dazzling holiday wonderland. As one of the Museum's most beloved holiday traditions, the Fête is a chance to celebrate the season with fellow Museum friends and supporters. This charming event is hosted by the Guild of Volunteers and features plenty of festive drinks and hors d'oeuvres to re-awaken your merry spirit. Enjoy sparkling lights, elegant displays and the magic of our 26th annual *Family Trees: A Celebration of Children's Literature*. Your ticket purchase also supports the thousands of children we serve through our educational initiatives.

We can't wait to see you at this joyous celebration! Tickets available at www.concordmuseum.org.

Above: Guild of Volunteers Co-Chairs, Carolyn Myers and Pam Nelson, flanking Fête Co-Chair Michelle McArdle. Not pictured: Fête Co-Chair Elizabeth Acquaviva.

BOARD of GOVERNORS

Holly Salemy, *President*
Dennis Burns, *Vice-President*
Churchill G. Franklin, *Vice-President*
Anna Winter Rasmussen, *Vice-President*
James R. Burke, *Treasurer*
Maryrose Sykes, *Secretary*
Nancy J. Barnard
Bill Becklean
Tara Cederholm
Greg Creamer
Holly Darzen
Andrew Feinberg
Jason Griswold
Sarah Garland-Hoch
Lauren Huyett
Phil Lotane
Susan Lynch
William McHale
Andrea Meyers
Robert Munro
Carolyn Myers
Claire Nelson
Pam Nelson
Perry Wu
Thomas J. Putnam,

Edward W. Kane Executive Director
Sarah Hindle, *Honorary Member*
Edward W. Kane, *Honorary Member*
Martha J. Wallace, *Honorary Member*
Margaret R. Burke,
Executive Director Emerita

BOARD of TRUSTEES

Greg Creamer, *Chair*
Theodore Alford
Kyle Barnard
Michele Bembenek
Kelly Benkert
Barbara Boardman
Matt Boger
Miranda Boylan
Richard D. Briggs, Jr.
Elise Browne
Aura Bruce
Pamela S. Callahan
Joan Campbell
David Capodilupo
Stephen W. Carr
Kate Chartener
Jennifer Coash
Jane Deering
Ralph Earle
Barbara Elliot
John Ferrell
Mary Ann Ferrell
John Flint
Lisa Foote
Janet H. Franklin

Meet our New Board President: Holly Salemy

Having been elected unanimously by the Board of Governors at its June meeting, Holly Salemy officially chaired her first board meeting in September and, with her husband, Louis, was one of the co-chairs of our celebration on September 12 to officially dedicate the Museum's permanent galleries. Holly has been involved with the Museum since 2001, serving from 2013 to 2015 as a Trustee and then as the co-president of the Guild of Volunteers from 2014 to 2016. She has been on the Board of Governors since 2017, was a member of the Executive Director Search Committee, and has been serving as the Secretary of the Board since 2018. Holly explained, "I look forward to working with my fellow Governors, the Trustees, Guild of Volunteers, the Museum's dynamic staff, and the community as we chart the next steps in the Museum's future."



Allison Shilling Wins New England Museum Association Excellence Award



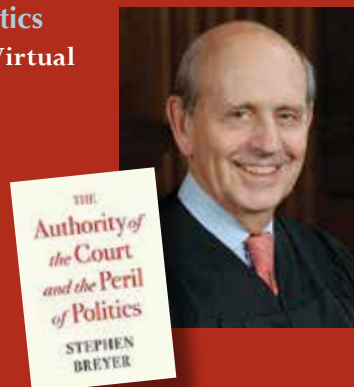
Each year the New England Museum Association (NEMA) recognizes a small handful of colleagues who have "demonstrated passion for improving New England's museum community; gone above and beyond in their work regardless of job description; performed an outstanding act of outreach, service, or imagination; taken the lead on a ground-breaking new project; and/or used technological advances to serve a new audience." We are thrilled to announce that Allison Shilling is one of this year's award winners for her transformational work in producing the Museum's new *History at Home* eblasts and our virtual Concord Museum Forum series. "Concord was at the center

of two revolutions in American history," wrote Executive Tom Putnam in his nomination letter, "Allison has been at the center of this most recent technological revolution that has forever transformed the work and outreach of the Concord Museum." The Award will be officially presented at NEMA's Annual Meeting on November 19, 2021.

The Supreme Court and the Peril of Politics Thursday, December 9 | 7:00 - 8:30 pm | Virtual

Join Supreme Court Justice Stephen Breyer as he discusses his recently published book, *The Authority of the Court and the Peril of Politics*, with Concord Museum Director Tom Putnam. Following the virtual conversation with Justice Breyer, a panel of experts will respond and debate the central argument in his new text and other challenges facing the nation and the Court.

In partnership with the National Archives and Records Administration



Museum Shop

Introducing the new Concord Museum gift shop! Partnering with local artists, the expanded gift shop features prints, cards, notebooks, and framed artwork. Locally made soaps and colonial games make the perfect additions to gifts. During our *Family Trees* event many new items and vendors will be added. All members receive a 10% discount on Museum merchandise.



Rentals

Create a historic experience by hosting your next event at the Concord Museum! Our Churchill and Janet Franklin Lyceum is the perfect space to host conferences, baby showers, or wedding welcome dinners. Equipped with an audiovisual system, this space works for corporate clients and private events. Members receive discounts on rentals.*Thinking of hosting an event? Contact Darcy Foster, the Manager of Visitor Services, at 978-369-9763 ext. 243 or dfoster@concordmuseum.org.

*Membership discount applies at the Contributor and above levels.

Group Tours

We are now offering our *Highlights of the Concord Museum* tour for our newly completed galleries. With 8 people or more, you can book a guided tour that explores our most famous objects and the history of Concord. If you're looking for an outdoor adventure, we offer multiple walking tours that travel through the center of our historic town. With group rate pricing, options for guided tours, and convenient parking, including bus parking, it has never been easier to visit the Concord Museum. Contact group tours@concordmuseum.org or 978-369-9763 ext. 243.

Educators from Chile Visit the Museum

This September a group of Chilean teachers visited the Museum and took part in a teacher workshop run by the Museum's School Programs Department. The teachers, based for several weeks at Framingham State University, discovered different ways that the Museum actively engages students with artifacts by exploring stone tools from the Sally Lanagan Teaching Collection, discussing the details of Henry Thoreau's desk, and analyzing the Museum's 18th-century period room. The teachers then worked on their own inquiry-based activities using the Museum's objects. Jennifer Phillips, who organized the group, explained, "The teachers were buzzing about it through the end of their stay and they gave rave reviews in their feedback session. It was an amazing experience and the teachers loved creating lesson



plans based on the Museum." During their visit to the U.S., these teachers engaged in a variety of classes, field trips, and workshops to help them bring some of the best ideas in Massachusetts K-12 educational practices to their students in Chile. We were so pleased to welcome international educators into our new galleries!

BOARD of TRUSTEES

continued

John Freeman
Sheila Giglio
Alexis Goltra
Miguel Gómez-Ibañez
Leann Griesinger
Robert A. Gross, Ph.D.
Martha Hamilton
Kristen Herbert
Jean Haley Hogan
Susan Hunt
William Huyett
Julie Kahn
Gail Keane
Nicole Picard Kelly
Kathleen Kennedy
Jonathan M. Keyes
Michael Lanagan
Judy Blaikie Lane
Jennifer Lannan
Sarah Sword Lazarus
Benjamin Lewis
Lesya Lysyj
Sue McCrory
Daniel O'Connor
Michael Pappone
Hilda Parrott
Brooke Redmond
Sue Revis
Robert L. Reynolds
Gilbert M. Roddy, Jr.
Bonnie Rosse
Patti A. Satterthwaite
Maryann Street
Katherine Takvorian
Edward G. Tiedemann, Jr.
Nancy Traversy
Henry Vaillant
Ann Webster
Catherine Webster
Kate Wharton
Susan Winstanley
Susan Zacharias
Roxanne Zak
Margaret W. Ziering
Charles A. Ziering

GUILD BOARD

Carolyn Myers, *Co-President*
Pam Nelson, *Co-President*
Lisa McAfee, *Treasurer*
Anette Lewis, *Secretary*
Elizabeth Acquaviva, Natalie Brown,
Joan Campbell, Lyn Carroll,
Patty Flint, Gail Hire,
Michelle McArdle, Pat Sinton

SPECIAL EXHIBITIONS

*HOME: Paintings by
Loring W. Coleman*

November 19—January 30, 2022

New Galleries Open Now!

WINTER HOURS

Tuesday to Sunday 10 am–4 pm
Also open Monday, 12/27; closed
11/25, 12/24 and 12/25

FAMILY TREES ADMISSION

November 24, 2021—January 2, 2022
\$18 adult, \$15 senior/student,
\$8 youth, \$5 child, under 3 free
and Museum Members free.

CONTACT

978-369-9763

cm1@concordmuseum.org

www.concordmuseum.org

Follow us on Facebook,
Instagram & Twitter



MC Mass
Cultural
Council



CONCORD MUSEUM

Post Office Box 146 Concord Massachusetts 01742

RETURN SERVICE REQUESTED

Non-Profit
Organization
U.S. Postage
P A I D
Permit No. 35
Concord, MA
0 1 7 4 2

Holiday HOUSE TOUR INSIDE OUT



Join the Guild of Volunteers for the 11th Annual Holiday House Tour on Saturday, December 11! We are thrilled to return this year's event to an in-person format, with the exciting twist of featuring a variety of beautifully decorated outdoor spaces sure to delight and inspire.

Tickets: \$30 Member | \$35 General Public
Available at concordmuseum.org

*Inclement weather date:
Sunday, December 12*



Family Trees at the Concord Museum

26th Annual Celebration of Children's Literature

52 fanciful trees and wreaths of all shapes and sizes,
decorated with original ornaments
inspired by acclaimed children's picture books.

Open Tuesday-Sunday
November 24-January 2 | 10:00 am-4:00 pm
also open Monday, 12/27; closed 11/25, 12/24 and 12/25